

# 1-3-6 in Kansas: The Role of Sound START in Supporting Sound Beginnings

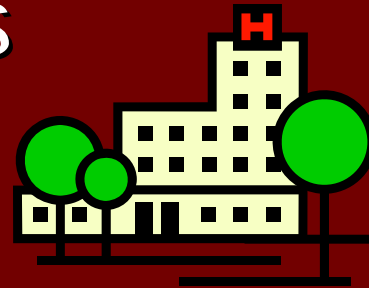


Carol Busch, M.S.  
Kansas State School for the Deaf  
Olathe, Kansas

Kim M. Aeillo, M.A., CCC-A  
Sound Beginnings, EHDI Program  
Topeka, Kansas

# Loss to Follow-Up

- What is Being Done Now
- Continued Areas of Concern
- Strategies for Consultants



# Screening by 1 Month

## ■ What is in Place Now:

- Send Letter to Family and Medical Home
- Continuing Education
- Pending Reports Sent to Hospitals



# Loss to Follow-up

- Out of Hospital Birth
- Return Appointment not Scheduled
- Family Does not Return
- NICU Focus on Other Issues



# Strategies

## ■ Educate:

- Medical Home
- Screeners and Hospital
- Hospital to Home Coordinators
- Infant/Toddler System & Family Service Coordinators
- Families

## ■ Education About:

- Importance of Rescreen
- Impact of Delayed Detection on Communication/Language



# Audiological Evaluation by 3 Months

## ■ What is in Place Now

- Pending List Sent to Medical Home
- Call Medical Home on Individual Basis
- List of Diagnostic Centers
- Middle Ear Pathology



# Loss to Follow-up

- Final Screening & Audiological Evaluation
  - Audiological not Scheduled
  - One Audiologist for Part of Testing & Referral to Another Audiologist for Different Testing
- Middle Ear Pathology
  - Do not get Referred to Audiologist



# Strategies



- Develop Protocols:
  - Educating Hospitals
  - Good Coordination Between Audiologists
  
- Middle Ear Pathology-Medical Home Education



# Early Intervention by 6 Months

## ■ What is in Place Now

- Audiological Report has Part C Referral
- EHDI calls: Medical Home, Infant/Toddler & Family
- Audiological Report is cc'd to EHDI, Part C, Medical Home



# Strategies

- Part C Early Intervention

- Keep on Your Radar

- “family declining services”



- Agency Interaction

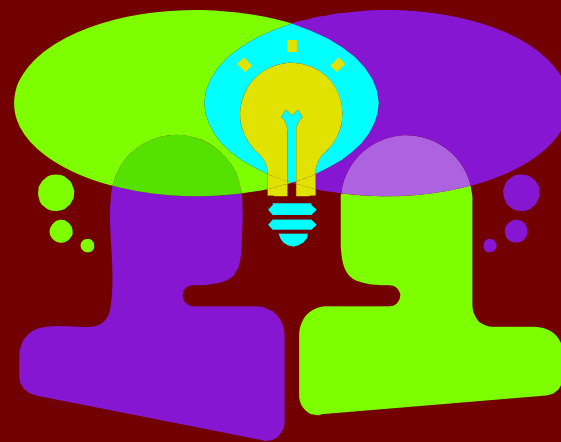
# At Any Time

- Everyone is Responsible
- Stakeholders Interact



# Resources

- NCHAM
- Other EHDI programs
- Advisory Committee
- Feedback from Every Participant in 1-3-6
- EHDI Express News
- AAP Algorithm – Checklist



# References

- NICHQ Learning Collaboration
- JCIH, 2007
- EHDI
- Part C Regulations



# Keys to Success

- Communication



- Commitment

# Thank You

Carol Busch, M.S.

[cbusch@ksd.state.ks.us](mailto:cbusch@ksd.state.ks.us)

Kansas State School for the Deaf  
Olathe, Kansas



Kim M. Aeillo, M.A., CCC-A

[KAeillo@kdhe.state.ks.us](mailto:KAeillo@kdhe.state.ks.us)

Sound Beginnings EHDI Program  
Topeka, Kansas